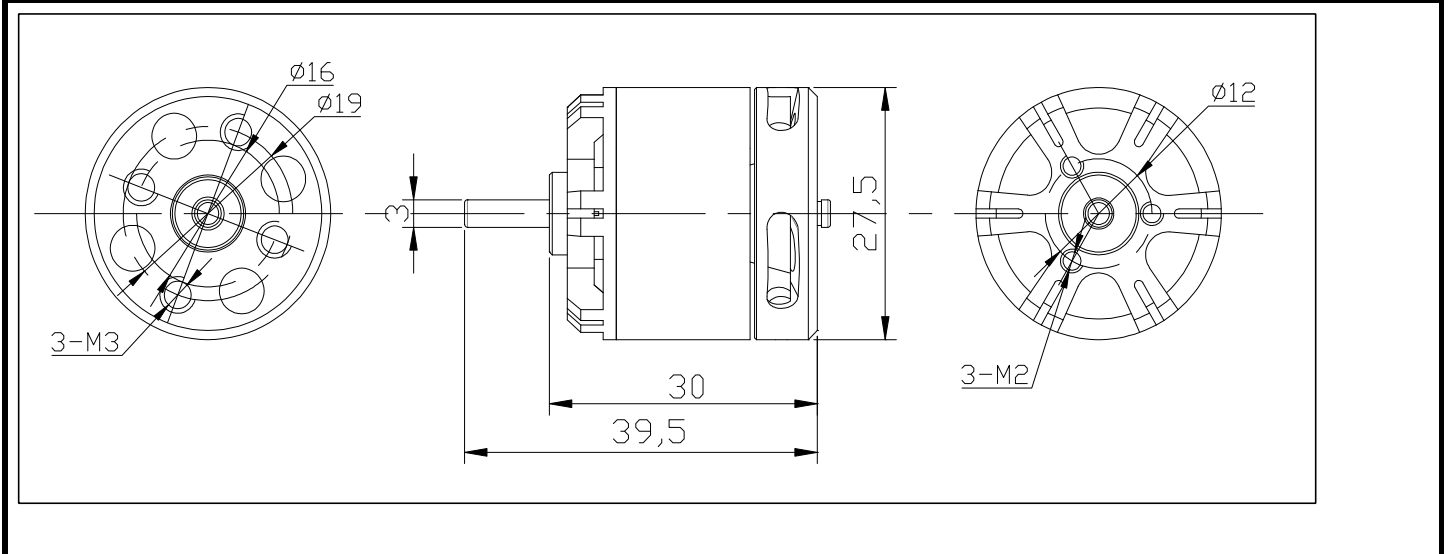


Dong Yang Servo Power Model Co.,Ltd

MOTOR MODEL: BE2212-5 (2300KV)

MOTOR OUTLINES:



MOTOR TECHNICAL DATA:

| Model | weight | VOLTAGE V | NO LOAD | | ON LOAD | | | | LOAD TYPE Battery/prop |
|----------------------|--------|--------------|--------------|--------------|--------------|--------------|-----------|------------|---------------------------|
| | | | CURRENT A | SPEED rpm | CURRENT A | SPEED rpm | Pull g | Power W | |
| BE2212-5 (2300KV) | 60g | 7.4 | 1.5 | 17177 | 12.3 | 14554 | 430 | 91.0 | LiPo x 3/7X4.5E |
| | | | | | 31.2 | 9669 | 800 | 230.9 | LiPo x 3/8X4E |
| | | | | | 28.5 | 10680 | 650 | 210.9 | LiPo x 3/9X6E |
| | | | | | 34.2 | 8760 | 920 | 253.1 | LiPo x 3/11X5.5E |
| | | | | | 39 | 7371 | 1000 | 288.6 | LiPo x 3/12X10E |

In order to satisfy application requirement of those heavy-load multi-axis aircrafts, DYS final released BE series super strength out-runner multicopter dedicated brushless motor, The BE series motor is with Kawasaki, Japan 1200 # 0.2mm high efficiency silicon steel and 40UH high temperature powerful magnet. Selected the Japanese NSK pure imported bearings to reduce motor vibration, shell using high-precision CNC machining and professional balancing test, making concentricity, balance is greatly enhanced. DYS BE Series multicopter dedicated motor perfectly compatible with more than 99% of commercially available brushless ESC.

Low vibration motor great for flying

- To make aircraft more stable
- Less operating noise
- More efficient
- Bearings long life